



# BOCA RATON MEDICAL ARTS

951 NW 13TH ST | BOCA RATON, FL



## SUMMARY

Medical Office Condo located in the desirable Medical Arts Center, close to Boca Raton Regional Hospital. Unit 5B&C is 2,488 SF and consists of a spacious reception, multiple exam rooms, office areas, and 3 restrooms. Easy to access one story building.

## LOCATION

Great location close to Boca Raton Regional Hospital between Glades Road and Palmetto Park Road in East Boca Raton.

## HIGHLIGHTS

- 2,488 SF
- Close to Boca Regional Hospital
- 3 Restrooms, 3 entrances & exits
- Exclusive to M.D., D.D.S., D.M.D
- Frontage along 13th Street

## SALE PRICE

**\$720,000**

KRISTY WHELCHER HARTOFILIS  
PRESIDENT  
561.939.6636

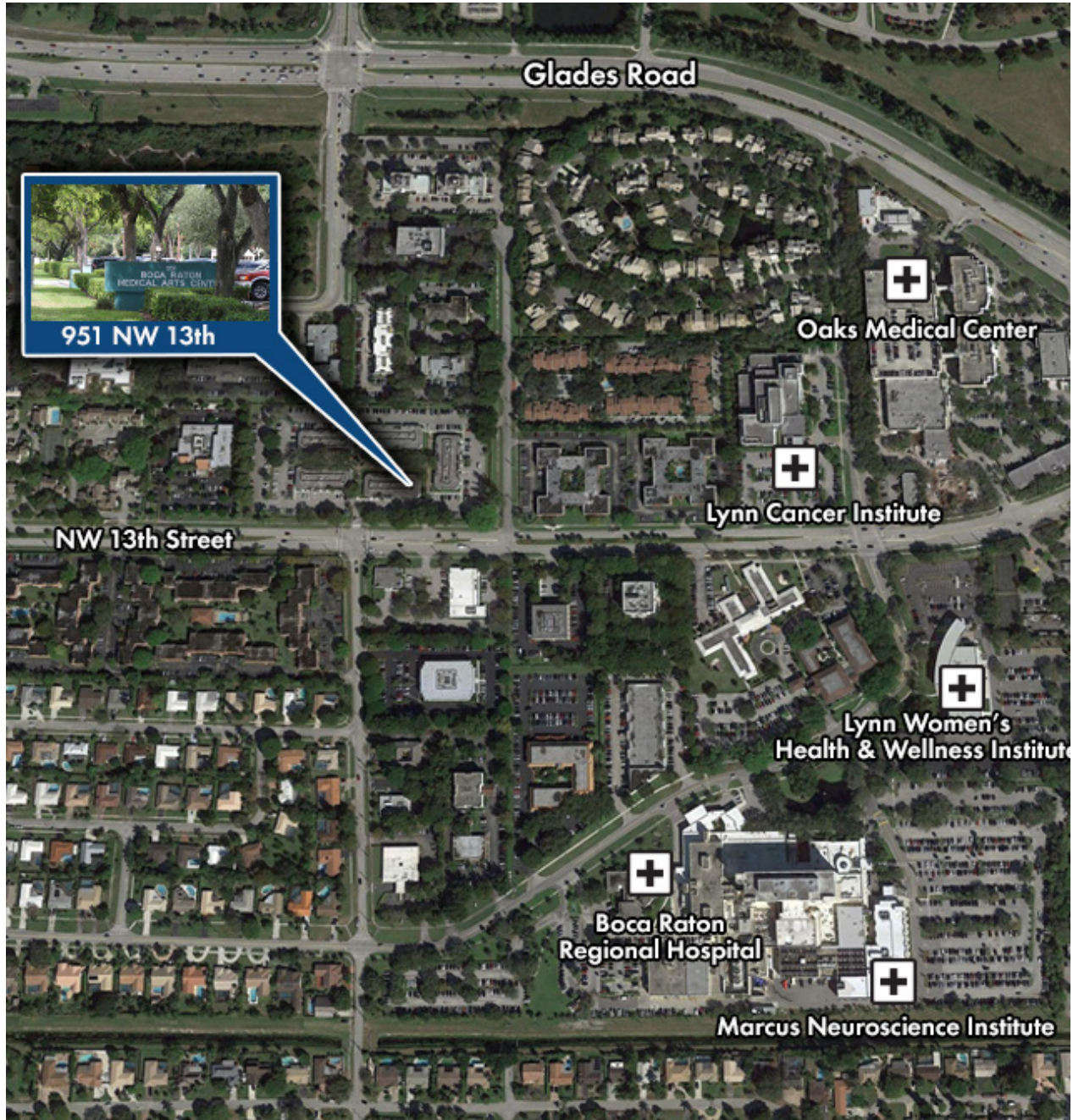
JAY WHELCHER, CCIM  
PRINCIPAL  
561.939.6635





# BOCA RATON MEDICAL ARTS

951 NW 13TH ST | BOCA RATON, FL



KRISTY WHELCHER HARTOFILIS  
PRESIDENT  
561.939.6636

JAY WHELCHER, CCIM  
PRINCIPAL  
561.939.6635

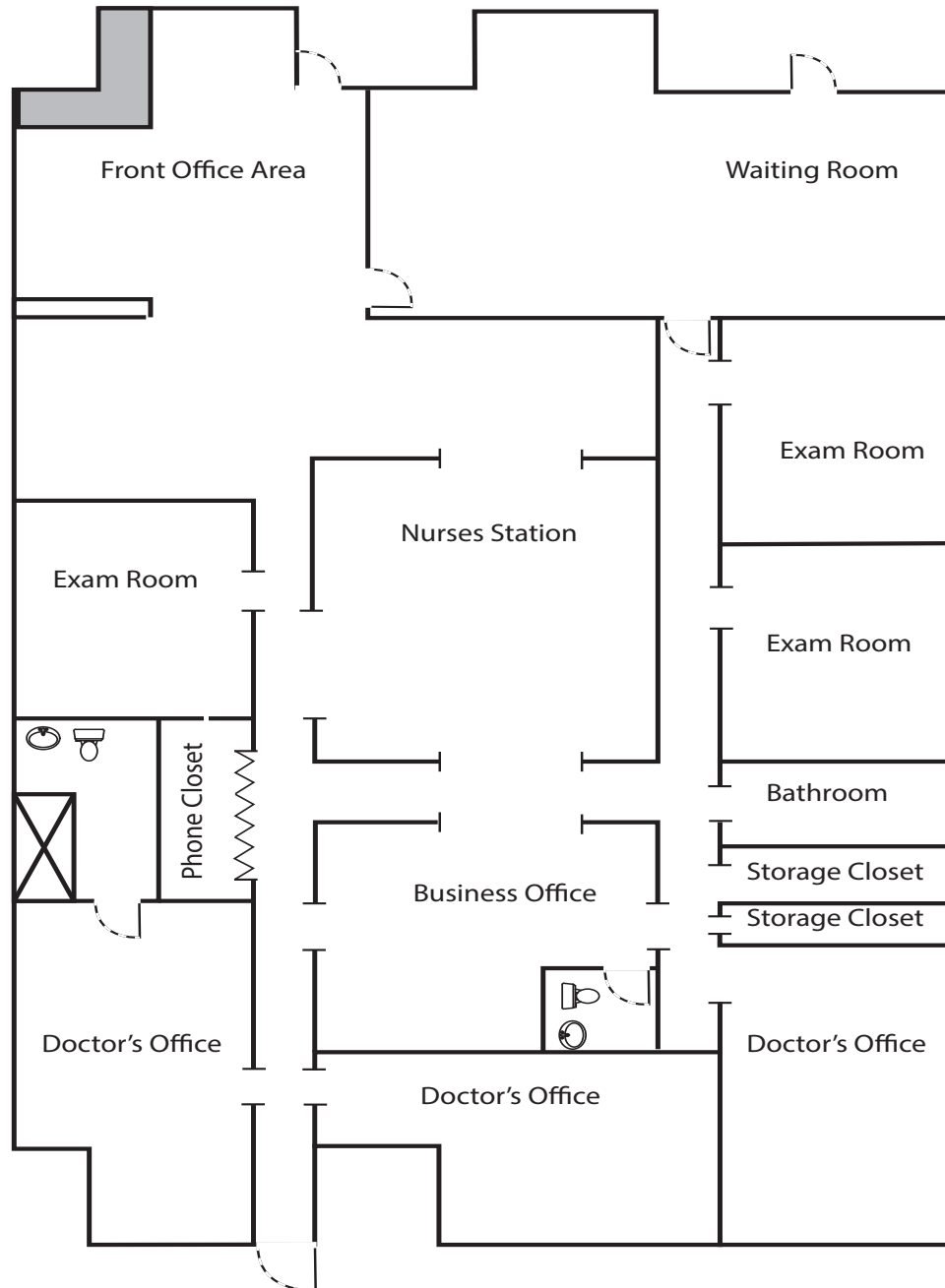




# BOCA RATON MEDICAL ARTS

951 NW 13TH ST | BOCA RATON, FL

**SUITE B&C: 2,488 SQUARE FEET**



KRISTY WHELCHER HARTOFILIS  
PRESIDENT  
561.939.6636

JAY WHELCHER, CCIM  
PRINCIPAL  
561.939.6635

