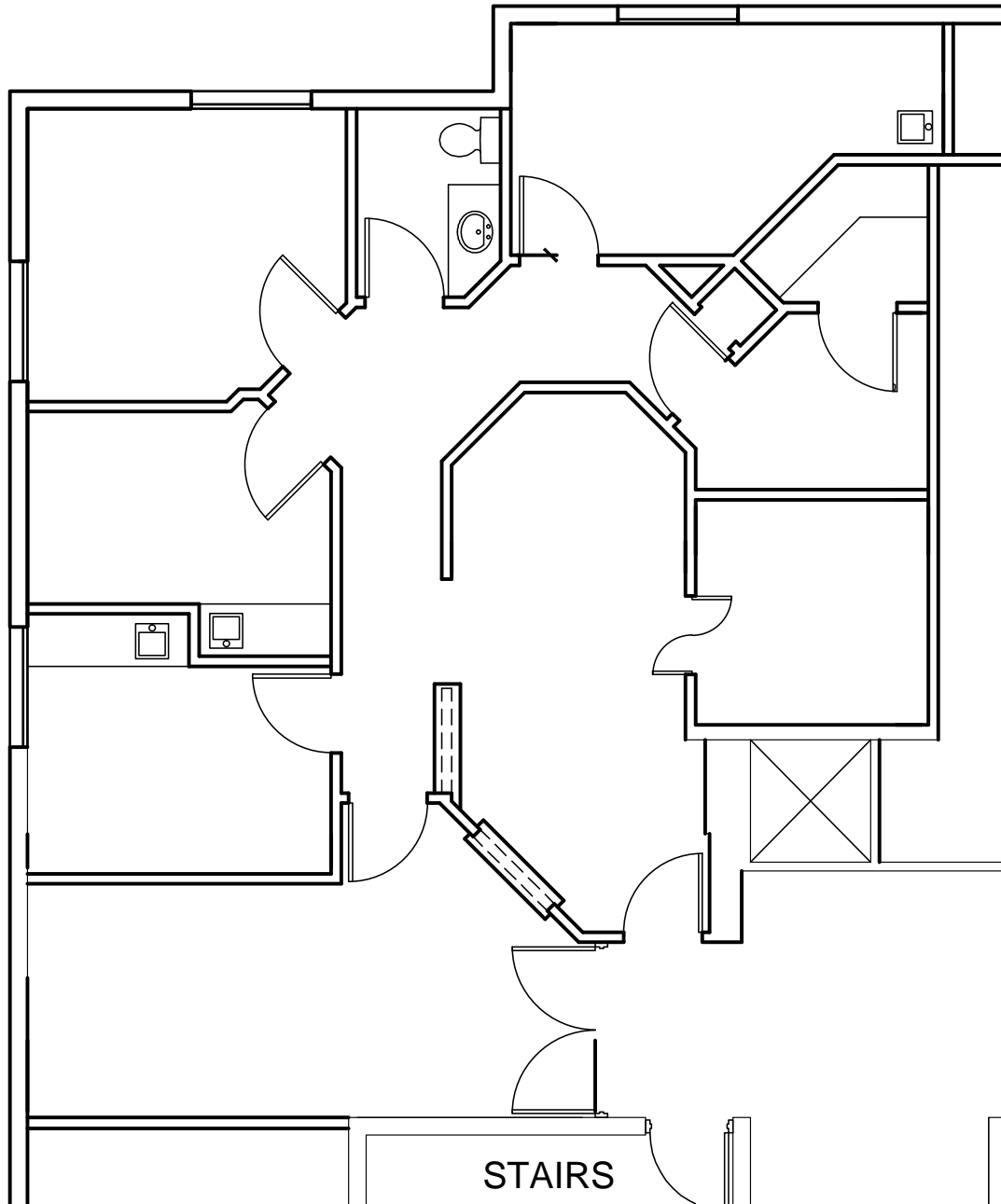


## SUITE 120: 1,423 SQUARE FEET



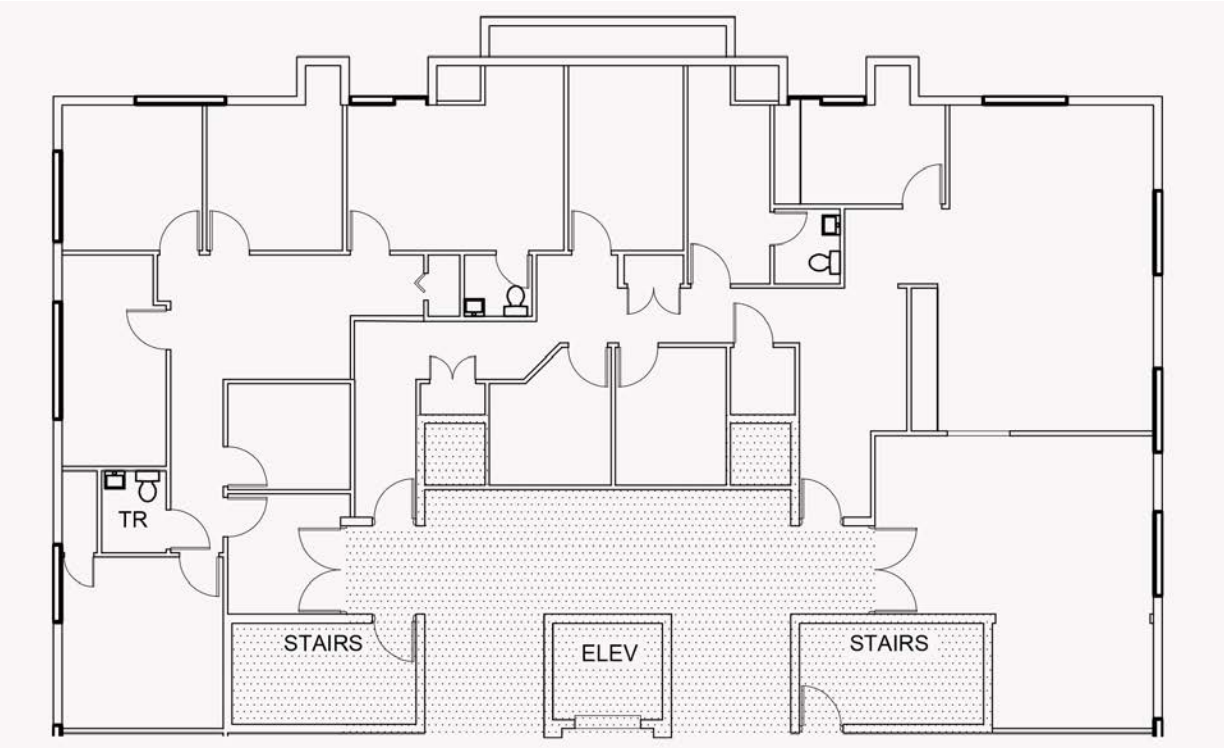
\*Existing space plan

KRISTY WHELCHER HARTOFILIS  
PRESIDENT  
561.939.6636

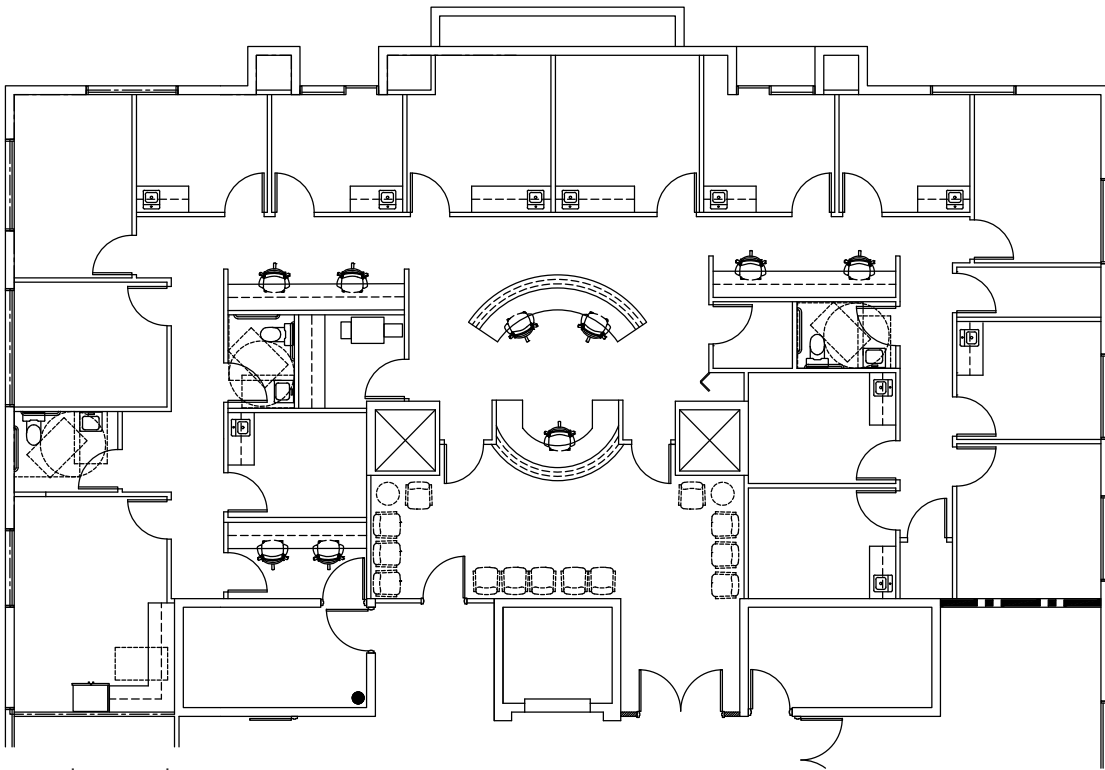
JAY WHELCHER, CCIM  
PRINCIPAL  
561.939.6635



# 3- HALF FLOOR: +/- 3,519 SQUARE FEET



\* Existing space plan



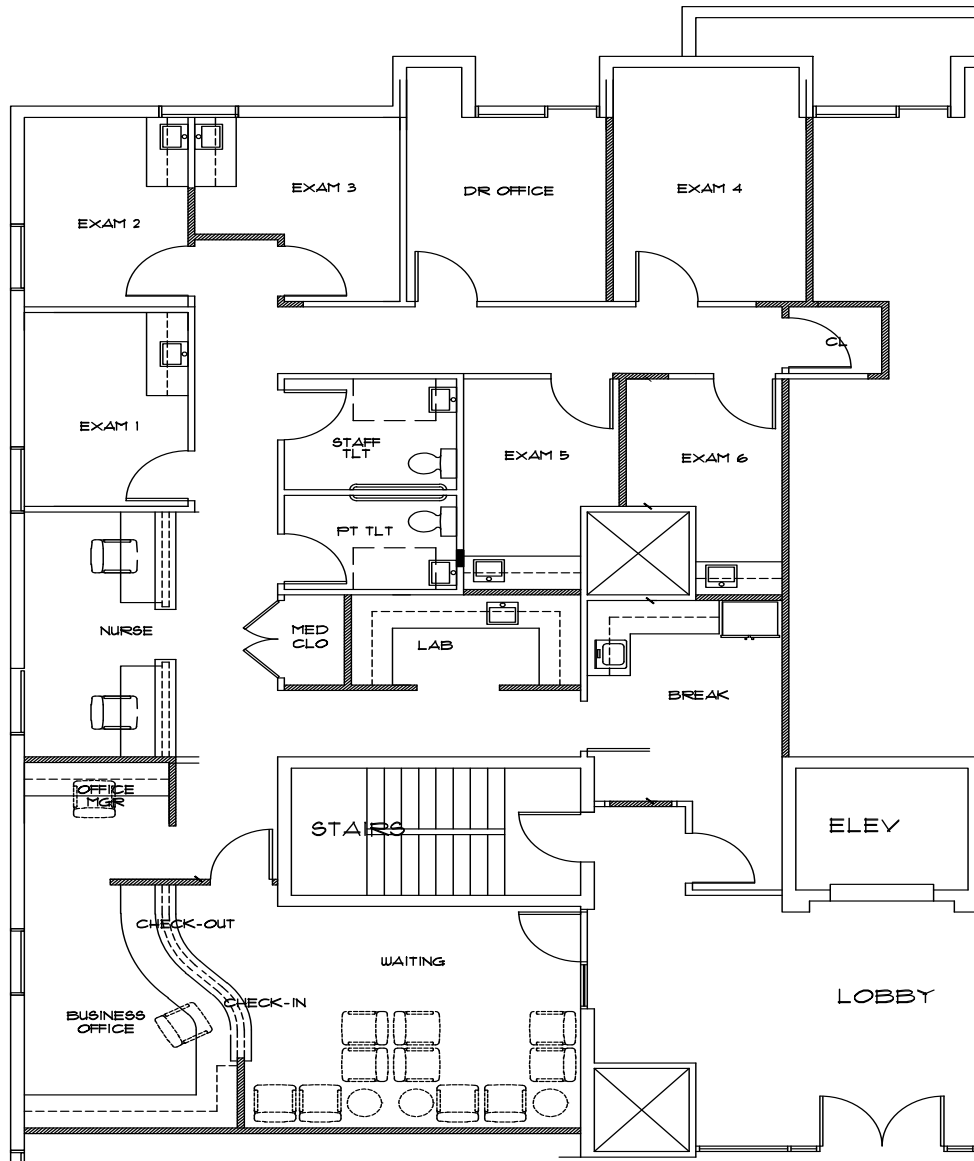
\* Proposed space plan

KRISTY WHELCHER HARTOFILIS  
PRESIDENT  
561.939.6636

JAY WHELCHER, CCIM  
PRINCIPAL  
561.939.6635



# SUITE 410: 2,604 SQUARE FEET



\* Proposed space plan

KRISTY WHELCHER HARTOFILIS  
PRESIDENT  
561.939.6636

JAY WHELCHER, CCIM  
PRINCIPAL  
561.939.6635

