



GALEN MEDICAL

880 NW 13TH ST | BOCA RATON, FL

FOR LEASE



SUMMARY

Expansive renovations are complete creating Boca's premiere medical office building. Galen Medical is a multi-tenant medical office building on the campus of Boca Raton Regional Hospital and one block off Glades Road in Boca Raton, FL. Property includes, 27,000 SF and has four spaces available for lease ranging from 1,423 SF to a half floor at approximately 3,519 SF. Under new ownership, robust tenant improvement packages are available.

LEASE INFORMATION

- \$23-\$26 NNN

- Operating Expense \$11.00

- *Includes Janitorial (Electric Separate)

- Suite 120 1,423 SF

- 3rd Half Floor +/- 3,519 SF

- Suite 410 2,604 SF

KRISTY WHELCHER HARTOFILIS
PRESIDENT
561.939.6636

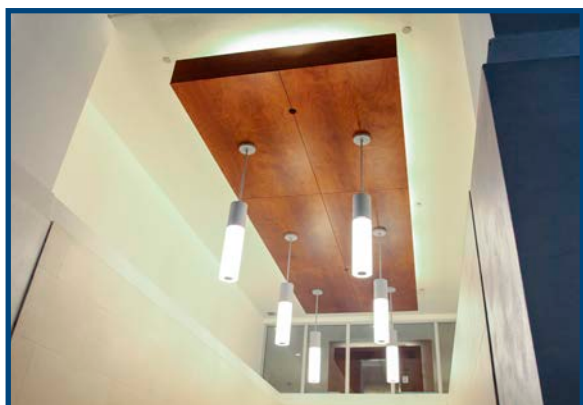
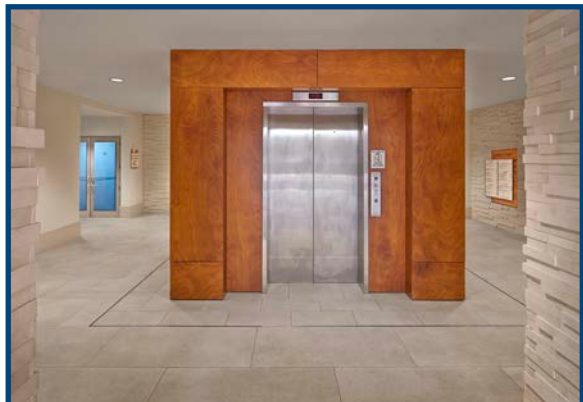
JAY WHELCHER, CCIM
PRINCIPAL
561.939.6635





GALEN MEDICAL

880 NW 13TH ST | BOCA RATON, FL

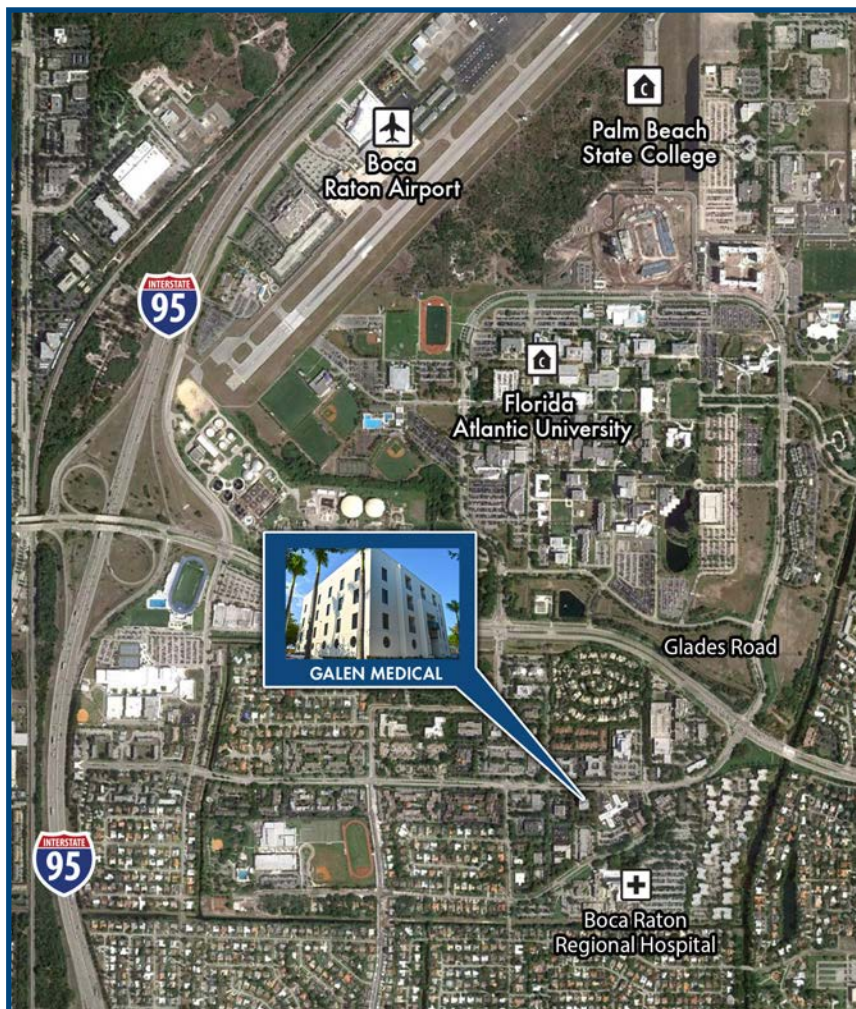


HIGHLIGHTS

- On Campus of BRRH
- 4 Story Medical Office Building
- Premier Medical Office Building
- New Roof 2009
- Built in 1984, major renovation 2015
- Located in the heart of Boca Raton
- Near FAU Campus
- Walking Distance to BRRH
- Back-up generator
- Local Ownership

LOCATION

Property is located in the center of tremendous growth from both Boca Raton Regional Hospital and Florida Atlantic University. The new Lynn Cancer Institute is across the street from the property and steps away to BRRH hospital and new Marcus Neuroscience Institute.



KRISTY WHELCHER HARTOFILIS
PRESIDENT
561.939.6636

JAY WHELCHER, CCIM
PRINCIPAL
561.939.6635





KRISTY WHELCHER HARTOFILIS
PRESIDENT
561.939.6636

JAY WHELCHER, CCIM
PRINCIPAL
561.939.6635





GALEN MEDICAL

880 NW 13TH ST | BOCA RATON, FL

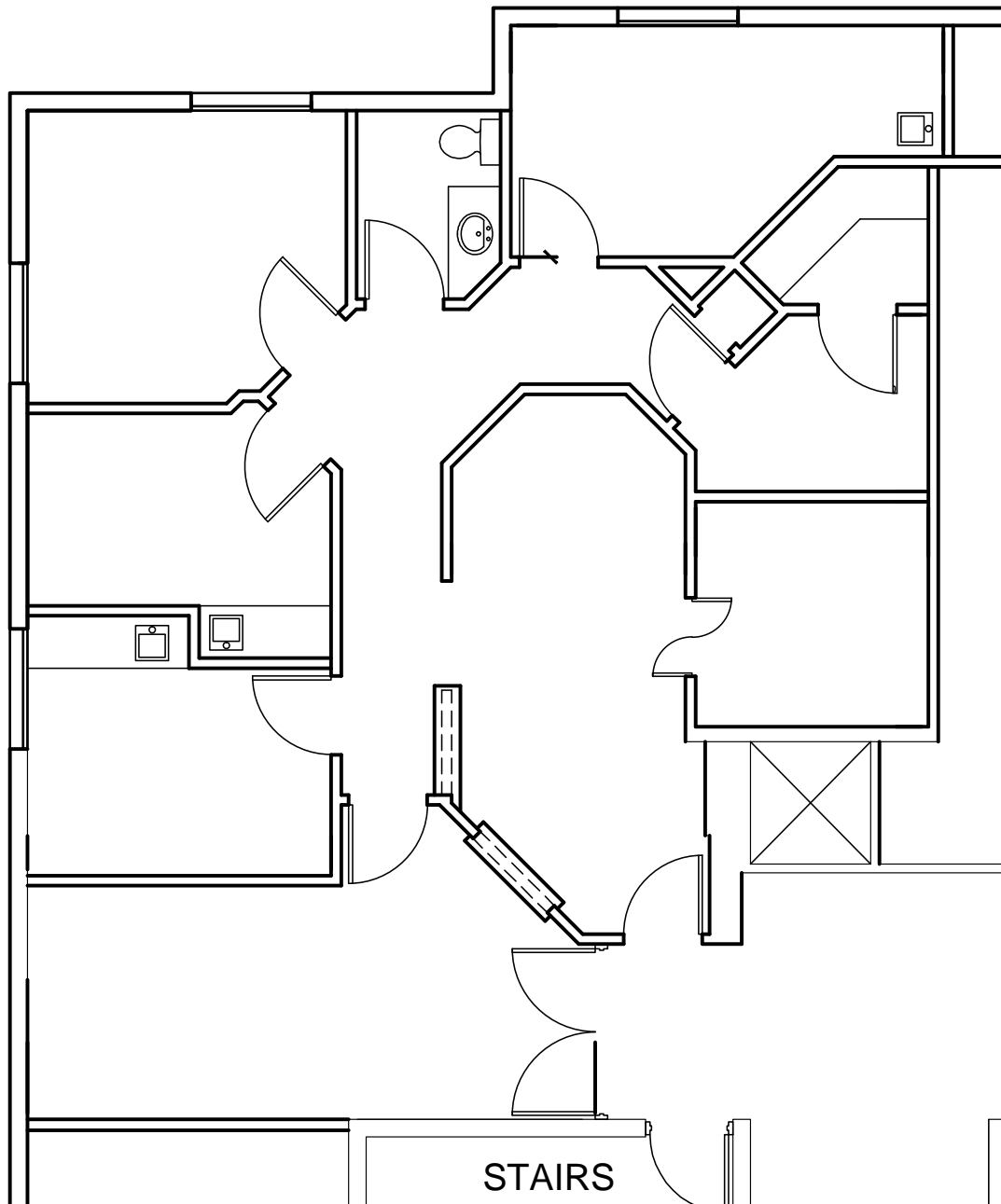


KRISTY WHELCHER HARTOFILIS
PRESIDENT
561.939.6636

JAY WHELCHER, CCIM
PRINCIPAL
561.939.6635



SUITE 120: 1,423 SQUARE FEET



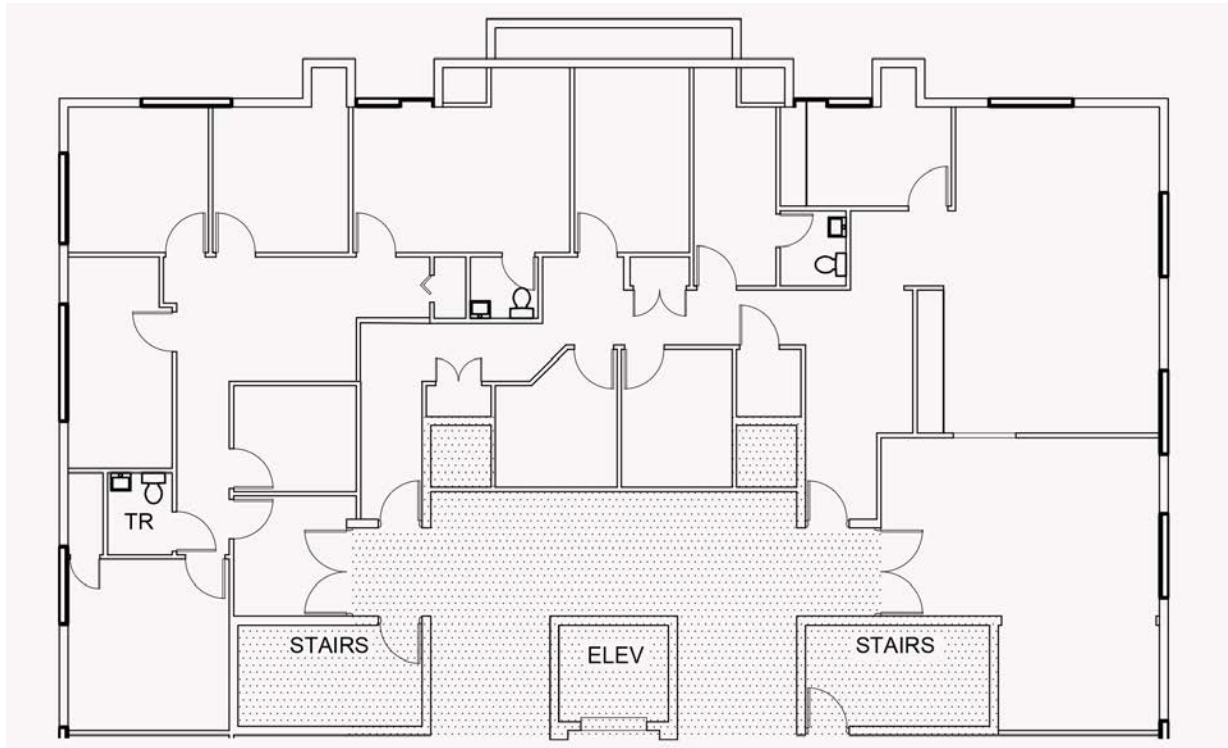
*Existing space plan

KRISTY WHELCHER HARTOFILIS
PRESIDENT
561.939.6636

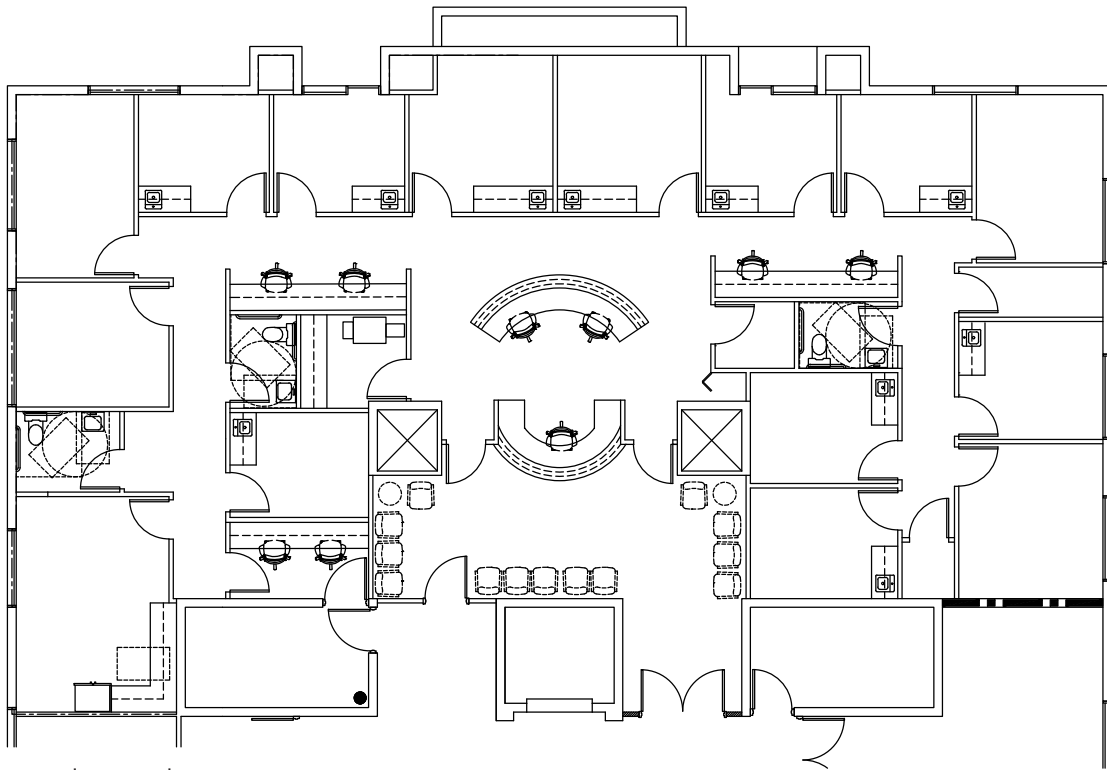
JAY WHELCHER, CCIM
PRINCIPAL
561.939.6635



3- HALF FLOOR: +/- 3,519 SQUARE FEET

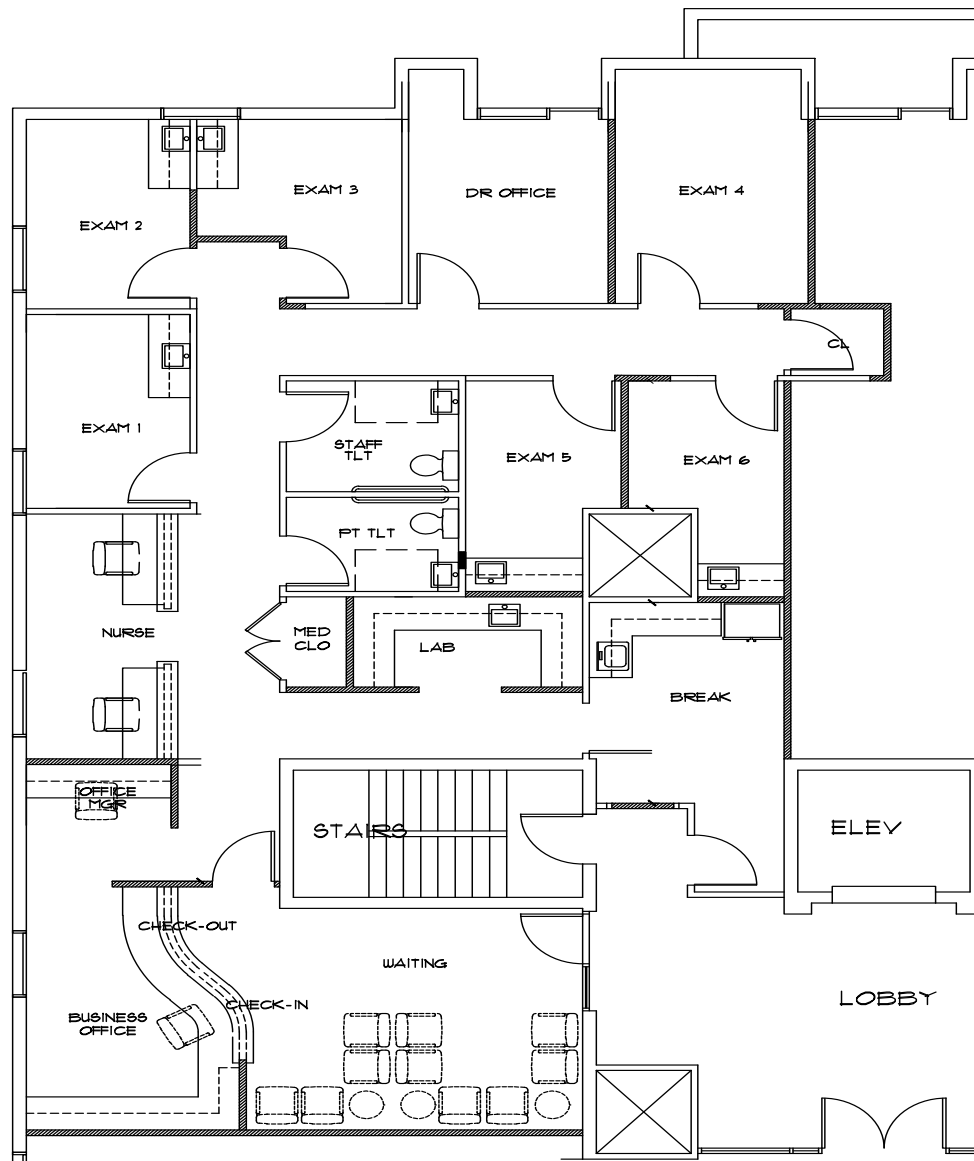


* Existing space plan



* Proposed space plan

SUITE 410: 2,604 SQUARE FEET



* Proposed space plan